

For Lease Downtown Oakland Retail



Address: 268 14th Street (between Harrison and Alice streets) Oakland, CA

Size: 1,766 square feet comprised of ground floor– 1,216 square feet mezzanine –550 square feet

Comments: located in a fast improving area

New Development includes:

- Martin Development, “The Lakeside”, 79 units next door
- SeKisui House and Holland Development, 261 unit development is catty corner
- Carmel Panthers “Atlas” a full city block, 633 units with retail is 1 1/2 blocks away

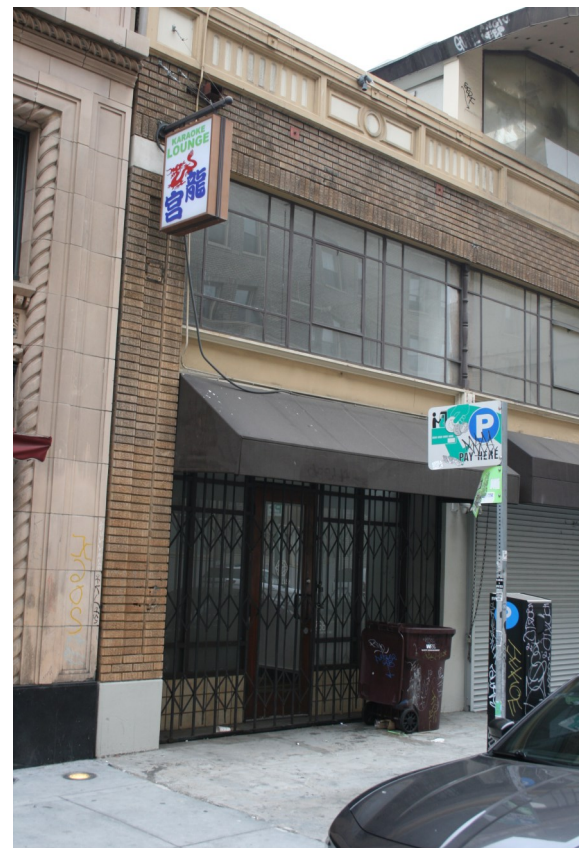
Rent: \$3.00 per square foot

Industrial gross \$5,298.00 per rent

Contact:

Steve Banker
BRE: 00577218
sbanker@lcbassociates.com

Ryan Dalton
RE Lic #01809447
Ryan@lcbassociates.com



510-763-7016