

Newly Constructed High Profile Retail Space Available In The Laurel District
3810 MacArthur Blvd. Oakland, CA
On-site Parking, Anchored By Devita Dialysis, New Construction.



Presented By:

Brad Banker

BRE:01985920

bbanker@lcbassociates.com

510-763-7090 ext. 215

Steve Banker

BRE:00577218

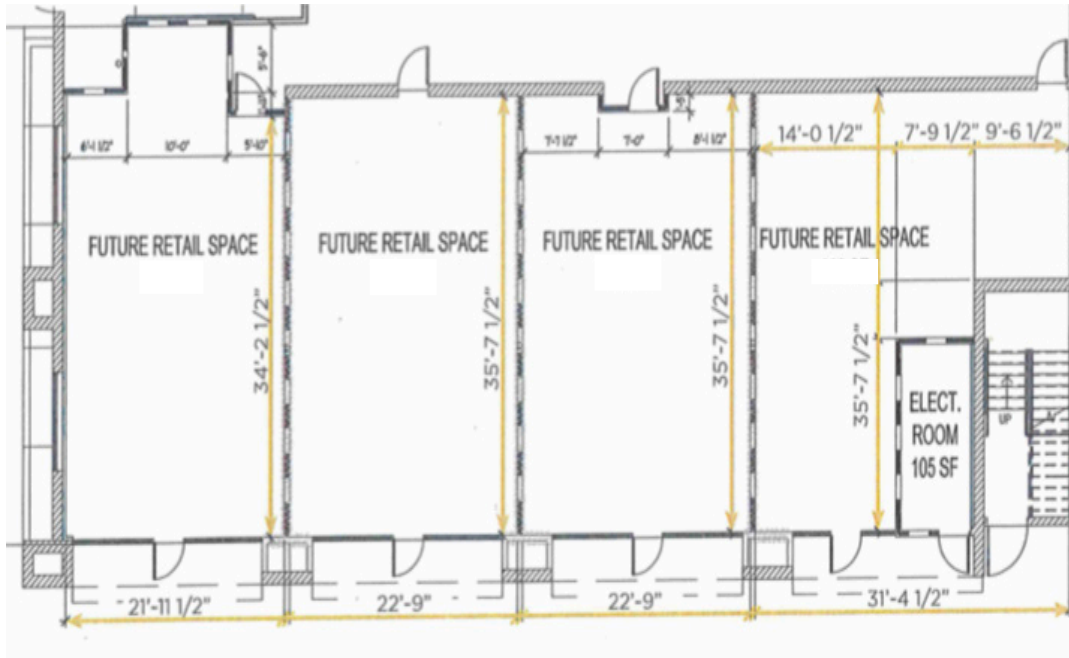
sbanker@lcbassociates.com

510-763-7090 ext. 206

Space Highlights

Size: 800- 3,525 Square Feet

Asking Rate: \$3.25- \$3.50 Per Square foot Per Month on an IG Basis



3810 Macarthur BLVD offers users a newly constructed High Profile retail space in one of Oakland's up and coming retail districts. The spaces feature high ceilings, new storefronts, great street frontage, rear access to the parking lot, and TI packages are available for qualified users. There is a potential to add infrastructure for both hooded and non hooded food uses.

These spaces are anchored by Devita Dialysis and provide onsite parking, a rare amenity for the Laurel District.

Presented By:

Brad Banker

BRE:01985920

bbanker@lcbassociates.com

510-763-7090 ext. 215

Steve Banker

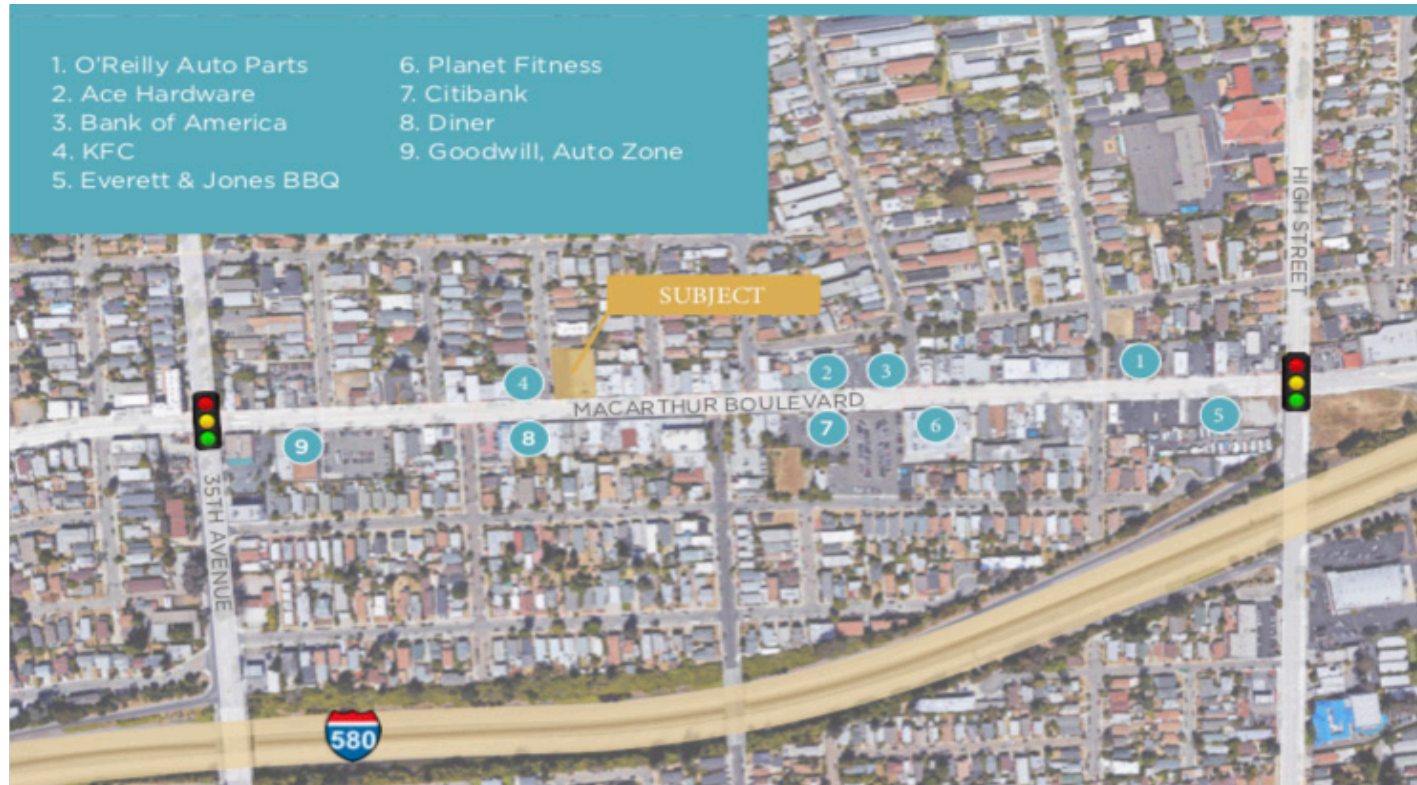
BRE:00577218

sbanker@lcbassociates.com

510-763-7090 ext. 206

The above information has been obtained from sources believed to be reliable, but LCB has not verified, nor has any knowledge regarding the accuracy or completeness of the information, and makes no representation or warranty concerning same. Therefore, LCB Associates disclaims all liabilities in connection with any inaccuracies or incompleteness.

Location



Presented By:

Brad Banker

BRE:01985920

bbanker@lcbassociates.com

510-763-7090 ext. 215

Steve Banker

BRE:00577218

sbanker@lcbassociates.com

510-763-7090 ext. 206

The above information has been obtained from sources believed to be reliable, but LCB has not verified, nor has any knowledge regarding the accuracy or completeness of the information, and makes no representation or warranty concerning same. Therefore, LCB Associates disclaims all liabilities in connection with any inaccuracies or incompleteness.